

# \$149,000 - 9042 Tudor Glen, St. Albert

MLS® #E4421823

**\$149,000**

2 Bedroom, 0.50 Bathroom, 808 sqft

Condo / Townhouse on 0.00 Acres

Grandin, St. Albert, AB

Top floor 2 bedroom apartment. With wood burning FIREPLACE With washer and dryer 2 Walk-in Closets in Master bedroom Balcony.

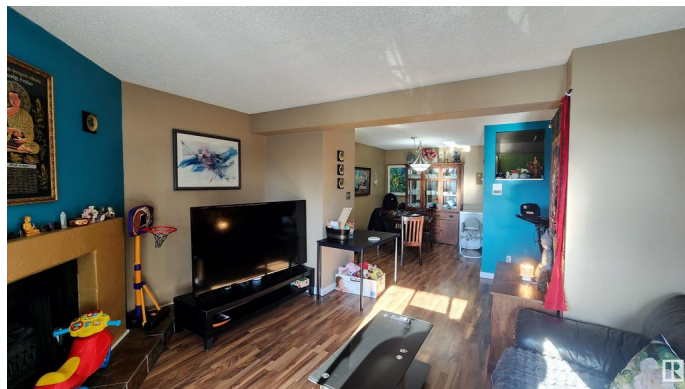
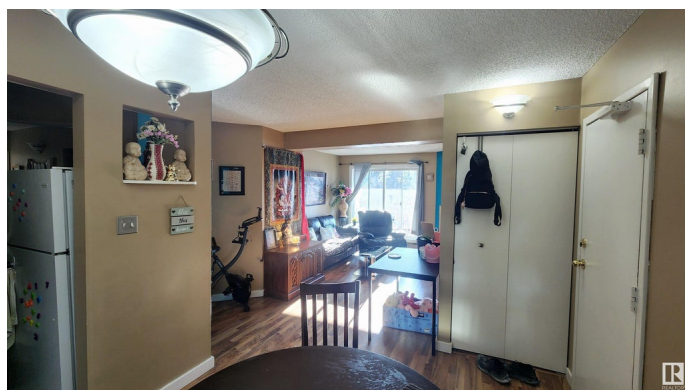
Built in 1981

## Essential Information

|                |                        |
|----------------|------------------------|
| MLS® #         | E4421823               |
| Price          | \$149,000              |
| Bedrooms       | 2                      |
| Bathrooms      | 0.50                   |
| Half Baths     | 1                      |
| Square Footage | 808                    |
| Acres          | 0.00                   |
| Year Built     | 1981                   |
| Type           | Condo / Townhouse      |
| Sub-Type       | Lowrise Apartment      |
| Style          | Single Level Apartment |
| Status         | Active                 |

## Community Information

|             |                 |
|-------------|-----------------|
| Address     | 9042 Tudor Glen |
| Area        | St. Albert      |
| Subdivision | Grandin         |
| City        | St. Albert      |
| County      | ALBERTA         |
| Province    | AB              |
| Postal Code | T8N 3V4         |



## Amenities

|           |   |
|-----------|---|
| Amenities | Intercom, No Smoking Home, Storage-In-Suite |
| Parking   | Stall                                       |

## Interior

|              |   |
|--------------|---|
| Appliances   | Dryer, Oven-Microwave, Refrigerator, Stove-Electric, Washer |
| Heating      | Baseboard, Natural Gas                                      |
| # of Stories | 4   |
| Stories      | 4   |
| Has Basement | Yes   |
| Basement     | None, No Basement   |

## Exterior

|                   |  |
|-------------------|--|
| Exterior          | Wood, Stucco   |
| Exterior Features | Flat Site, Level Land, Playground Nearby, Schools, Shopping Nearby |
| Roof              | Asphalt Shingles   |
| Construction      | Wood, Stucco   |
| Foundation        | Concrete Perimeter   |

## Additional Information

|                |                     |
|----------------|---------------------|
| Date Listed    | February 16th, 2025 |
| Days on Market | 66                  |
| Zoning         | Zone 24             |
| Condo Fee      | \$446               |

DATA IS DEEMED RELIABLE BUT IS NOT GUARANTEED ACCURATE BY THE REALTORS® ASSOCIATION OF EDMONTON. COPYRIGHT 2025 BY THE REALTORS® ASSOCIATION OF EDMONTON. ALL RIGHTS RESERVED. Trademarks are owned or controlled by the Canadian Real Estate Association (CREA) and identify real estate professionals who are members of CREA (REALTOR®, REALTORS®) and/or the quality of services they provide (MLS®, Multiple Listing Service®)

Listing information last updated on April 23rd, 2025 at 4:02am MDT