

\$769,900 - 1135 Gyrfalcon Crescent, Edmonton

MLS® #E4428619

\$769,900

4 Bedroom, 3.00 Bathroom, 2,406 sqft

Single Family on 0.00 Acres

Hawks Ridge, Edmonton, AB

Brand new build 2406 Sq Ft 2 storey home on a corner lot with a private and amazing location backing a quiet walking path, treeline and protected green space. This home has a open concept with 4 bedrooms upstairs with a beautiful ensuite bath with tub and enclosed modern glass shower and second floor laundry and also a large bonus room overlooking a modern concept main floor with high ceilings and modern finishing's. The home also features a SEPERATE SIDE ENTRANCE to basement with potential for a legal secondary suite. The main floor also has a office/Den area and a beautiful kitchen area with a extra butlers pantry/spice kitchen and large mud room off the back garage door and a full bath on the main. This home is amazing and provides perfect spaces for a growing family.

Built in 2025

Essential Information

| | |
|----------------|-----------|
| MLS® # | E4428619 |
| Price | \$769,900 |
| Bedrooms | 4 |
| Bathrooms | 3.00 |
| Full Baths | 3 |
| Square Footage | 2,406 |
| Acres | 0.00 |
| Year Built | 2025 |



Type Single Family
 Sub-Type Detached Single Family
 Style 2 Storey
 Status Active

Community Information

Address 1135 Gyrfalcon Crescent
 Area Edmonton
 Subdivision Hawks Ridge
 City Edmonton
 County ALBERTA
 Province AB
 Postal Code T5S 0S5

Amenities

Amenities Ceiling 9 ft., See Remarks
 Parking Spaces 4
 Parking Double Garage Attached

Interior

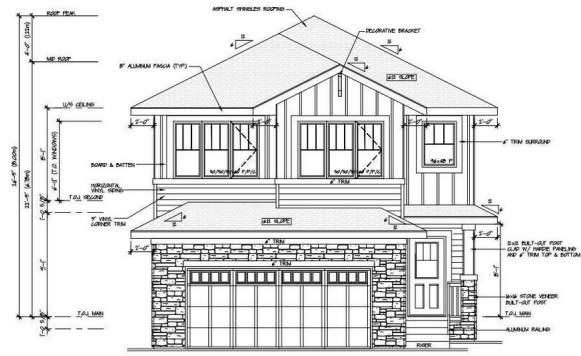
Interior Features ensuite bathroom
 Appliances See Remarks
 Heating Forced Air-1, Natural Gas
 Fireplace Yes
 Fireplaces Insert
 Stories 2
 Has Basement Yes
 Basement Full, Unfinished

Exterior

Exterior Wood, Vinyl
 Exterior Features Cul-De-Sac, See Remarks
 Roof Asphalt Shingles
 Construction Wood, Vinyl
 Foundation Concrete Perimeter

Additional Information

Date Listed April 2nd, 2025
 Days on Market 2



Front Elevation



DATA IS DEEMED RELIABLE BUT IS NOT GUARANTEED ACCURATE BY THE REALTORS® ASSOCIATION OF EDMONTON. COPYRIGHT 2025 BY THE REALTORS® ASSOCIATION OF EDMONTON. ALL RIGHTS RESERVED. Trademarks are owned or controlled by the Canadian Real Estate Association (CREA) and identify real estate professionals who are members of CREA (REALTOR®, REALTORS®) and/or the quality of services they provide (MLS®, Multiple Listing Service®)

Listing information last updated on April 4th, 2025 at 2:47pm MDT