

## \$149,900 - 204 11445 Ellerslie Road, Edmonton

MLS® #E4429843

**\$149,900**

1 Bedroom, 1.00 Bathroom, 594 sqft

Condo / Townhouse on 0.00 Acres

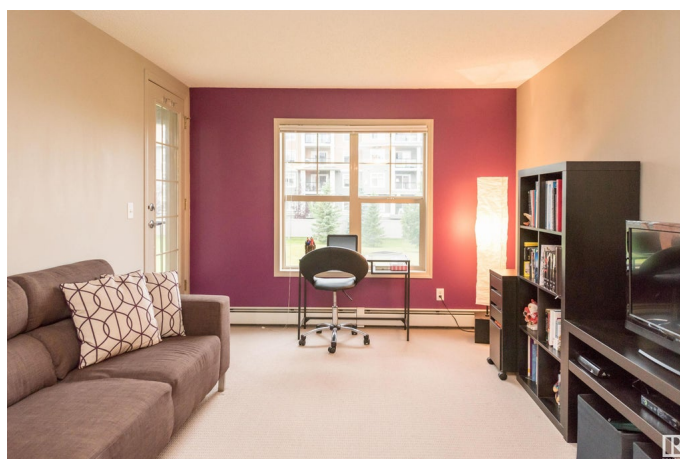
Rutherford (Edmonton), Edmonton, AB

This ideal one bedroom condo is located in RUTHERFORD VILLAGE. This unit exhibits an open area concept with a large living room and a gourmet style kitchen with a breakfast island. The spacious bedroom has access to the 4-piece bathroom with another entrance to the main unit. Enjoy the convenience of UNDERGROUND PARKING and STORAGE LOCKER as well as in-suite laundry. Enjoy the summers on the covered private BALCONY! This building is close to all amenities including shopping, restaurants, public transportation, LRT and Anthony Henday. The seller to provide \$1000 REBATE for refrigerator replacement"

Built in 2005

### Essential Information

|                |                   |
|----------------|-------------------|
| MLS® #         | E4429843          |
| Price          | \$149,900         |
| Bedrooms       | 1                 |
| Bathrooms      | 1.00              |
| Full Baths     | 1                 |
| Square Footage | 594               |
| Acres          | 0.00              |
| Year Built     | 2005              |
| Type           | Condo / Townhouse |
| Sub-Type       | Lowrise Apartment |



|        |                        |
|--------|------------------------|
| Style  | Single Level Apartment |
| Status | Active                 |

### Community Information

|             |                          |
|-------------|--------------------------|
| Address     | 204 11445 Ellerslie Road |
| Area        | Edmonton                 |
| Subdivision | Rutherford (Edmonton)    |
| City        | Edmonton                 |
| County      | ALBERTA                  |
| Province    | AB                       |
| Postal Code | T6W 1T1                  |

### Amenities

|           |  |
|-----------|--|
| Amenities | Intercom, Parking-Visitor, Secured Parking, Security Door, See Remarks |
| Parking   | Underground  |

### Interior

|              |  |
|--------------|--|
| Appliances   | Dishwasher-Built-In, Dryer, Refrigerator, Stove-Electric, Washer |
| Heating      | Hot Water, Natural Gas   |
| # of Stories | 4  |
| Stories      | 1  |
| Has Basement | Yes  |
| Basement     | None, No Basement  |

### Exterior

|                   |  |
|-------------------|--|
| Exterior          | Wood, Brick, Stucco  |
| Exterior Features | Airport Nearby, Golf Nearby, Playground Nearby, Public Transportation, Schools, Shopping Nearby, See Remarks |
| Roof              | Asphalt Shingles   |
| Construction      | Wood, Brick, Stucco  |
| Foundation        | Concrete Perimeter   |

### Additional Information

|                |                 |
|----------------|-----------------|
| Date Listed    | April 9th, 2025 |
| Days on Market | 85              |
| Zoning         | Zone 55         |
| Condo Fee      | \$523           |

DATA IS DEEMED RELIABLE BUT IS NOT GUARANTEED ACCURATE BY THE REALTORS® ASSOCIATION OF EDMONTON. COPYRIGHT 2025 BY THE REALTORS® ASSOCIATION OF EDMONTON. ALL RIGHTS RESERVED. Trademarks are owned or controlled by the Canadian Real Estate Association (CREA) and identify real

estate professionals who are members of CREA (REALTOR®®, REALTORS®®) and/or the quality of services they provide (MLS®®, Multiple Listing Service®®)

Listing information last updated on July 2nd, 2025 at 10:18pm MDT