

## \$439,000 - 3327 130 Avenue, Edmonton

MLS® #E4433042

**\$439,000**

4 Bedroom, 3.00 Bathroom, 1,489 sqft

Single Family on 0.00 Acres

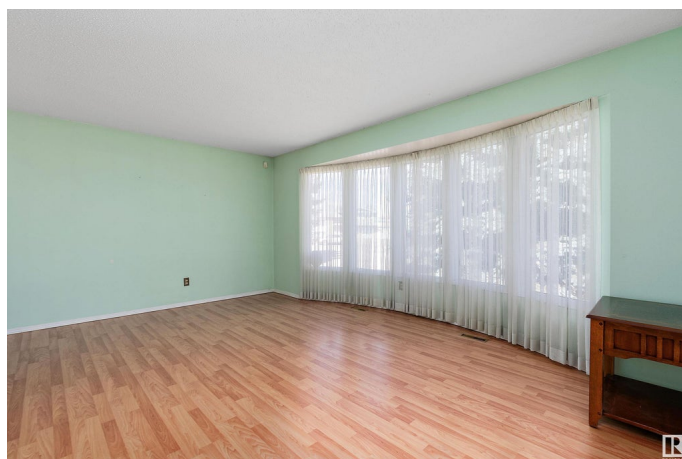
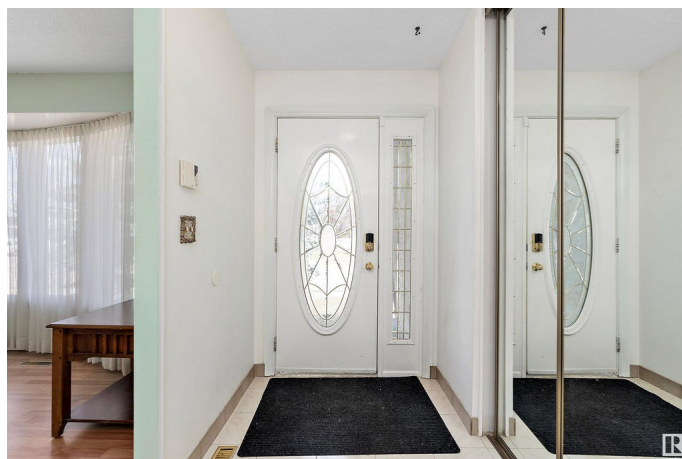
Belmont, Edmonton, AB

Tranquility Meets Convenience â€“  
Ravine-Backed Bungalow with 22 x 24  
Oversized Garage! Peace & privacy await in  
this lovely 3+1 bed, 3 bath, 1489 sq ft  
bungalow tucked in a quiet cul-de-sac backing  
onto Kennedale Ravine. Enjoy scenic views  
from your fenced yard with private gate access  
to trails. Inside offers a spacious living room,  
dining room, family room with wood-burning  
fireplace, kitchen with breakfast nook & patio  
doors to the deck, plus 3 generous bedrooms  
including a primary with ensuite. The finished  
basement has a huge rumpus room, 4th  
bedroom, 3rd bath, laundry & loads of storage.  
The **\*\*oversized double garage\*\*** and long  
driveway offer parking for 4+ vehicles or your  
RV. A secure iron gate encloses the yard. Just  
minutes from Hermitage & Rundle Park, golf,  
river valley trails, shopping, transit, and with  
easy access to Yellowhead & Anthony  
Hendayâ€”this home is the perfect balance of  
city living and natural beauty. Come see it!

Built in 1976

### Essential Information

MLS® #	E4433042
Price	\$439,000
Bedrooms	4
Bathrooms	3.00



Full Baths	3
Square Footage	1,489
Acres	0.00
Year Built	1976
Type	Single Family
Sub-Type	Detached Single Family
Style	Bungalow
Status	Active

### Community Information

Address	3327 130 Avenue
Area	Edmonton
Subdivision	Belmont
City	Edmonton
County	ALBERTA
Province	AB
Postal Code	T5A 3B4

### Amenities

Amenities	Off Street Parking, On Street Parking, Deck, R.V. Storage
Parking Spaces	6
Parking	Double Garage Detached, Front Drive Access, Heated, Insulated, Over Sized, RV Parking

### Interior

Interior Features	ensuite bathroom
Appliances	Alarm/Security System, Dishwasher-Built-In, Dryer, Microwave Hood Fan, Refrigerator, Storage Shed, Stove-Electric, Washer, Window Coverings, Refrigerators-Two
Heating	Forced Air-1, Natural Gas
Fireplace	Yes
Fireplaces	Brick Facing, Mantel, Stone Facing
Stories	2
Has Basement	Yes
Basement	Full, Finished

### Exterior

Exterior	Wood, Brick, Stucco
Exterior Features	Backs Onto Park/Trees, Cul-De-Sac, Fenced, Flat Site, Golf Nearby,

Landscaped, No Back Lane, No Through Road, Public Swimming Pool, Public Transportation, Ravine View, Schools, Shopping Nearby, Ski Hill Nearby, See Remarks

Roof	Asphalt Shingles
Construction	Wood, Brick, Stucco
Foundation	Concrete Perimeter

### School Information

Elementary	Belmont,Sifton,Goretti
Middle	Seton, John D.Bracco
High	Eastglen,ME Lazerte,OLeary

### Additional Information

Date Listed	April 25th, 2025
Days on Market	23
Zoning	Zone 35

DATA IS DEEMED RELIABLE BUT IS NOT GUARANTEED ACCURATE BY THE REALTORS® ASSOCIATION OF EDMONTON. COPYRIGHT 2025 BY THE REALTORS® ASSOCIATION OF EDMONTON. ALL RIGHTS RESERVED.Trademarks are owned or controlled by the Canadian Real Estate Association (CREA) and identify real estate professionals who are members of CREA (REALTOR®, REALTORS®) and/or the quality of services they provide (MLS®, Multiple Listing Service®)

Listing information last updated on May 18th, 2025 at 3:02am MDT