

\$499,900 - 12930 160a Avenue, Edmonton

MLS® #E4435175

\$499,900

4 Bedroom, 3.00 Bathroom, 1,386 sqft

Single Family on 0.00 Acres

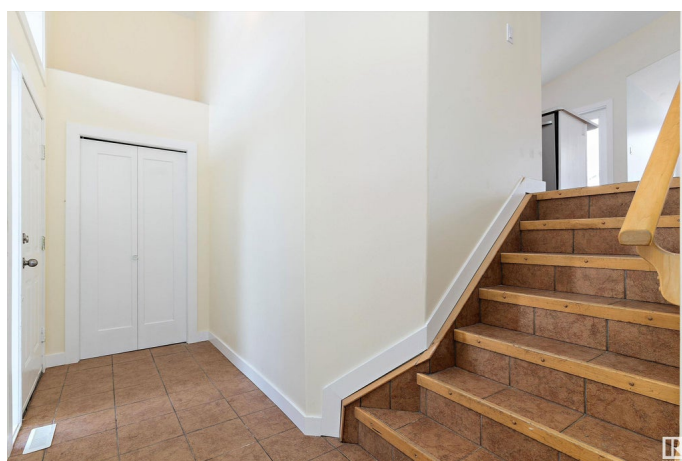
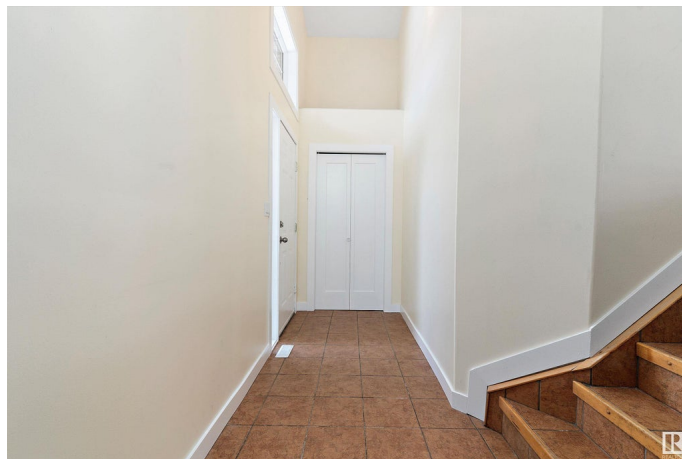
Oxford, Edmonton, AB

Looking for a spacious family home in Oxford? This bright, open plan bi-level offers everything you need and more, Rent to Own option may be considered! Freshly painted throughout with brand-new LVP flooring, sleek ceramic tile, and modern countertops, this home is ready for you to move right in. The fully finished basement adds extra living space, while the double attached garage provides convenience and storage. With 4 bedrooms and 3 bathrooms, including a primary suite with a walk-in closet and a full en-suite, this home is designed for comfort. The open-plan layout and vaulted ceilings create a bright and airy atmosphere, perfect for family gatherings. Plus, all appliances are included, and the fully fenced yard is ideal for outdoor fun. Situated on a quiet street with easy access to transit, shopping, and more, this home is the perfect blend of style, space, and location for your growing family!

Built in 2002

Essential Information

MLS® #	E4435175
Price	\$499,900
Bedrooms	4
Bathrooms	3.00
Full Baths	3



Square Footage	1,386
Acres	0.00
Year Built	2002
Type	Single Family
Sub-Type	Detached Single Family
Style	Bi-Level
Status	Active

Community Information

Address	12930 160a Avenue
Area	Edmonton
Subdivision	Oxford
City	Edmonton
County	ALBERTA
Province	AB
Postal Code	T6V 1R3

Amenities

Amenities	See Remarks
Parking Spaces	4
Parking	Double Garage Attached

Interior

Interior Features	ensuite bathroom
Appliances	Dishwasher-Built-In, Dryer, Fan-Ceiling, Microwave Hood Fan, Refrigerator, Stove-Electric, Washer
Heating	Forced Air-1, Natural Gas
Fireplaces	Mantel
Stories	2
Has Basement	Yes
Basement	Full, Finished

Exterior

Exterior	Wood, Brick, Vinyl
Exterior Features	See Remarks
Roof	Asphalt Shingles
Construction	Wood, Brick, Vinyl
Foundation	Concrete Perimeter

Additional Information

Date Listed May 8th, 2025

Days on Market 15

Zoning Zone 27

DATA IS DEEMED RELIABLE BUT IS NOT GUARANTEED ACCURATE BY THE REALTORS® ASSOCIATION OF EDMONTON. COPYRIGHT 2025 BY THE REALTORS® ASSOCIATION OF EDMONTON. ALL RIGHTS RESERVED. Trademarks are owned or controlled by the Canadian Real Estate Association (CREA) and identify real estate professionals who are members of CREA (REALTOR®, REALTORS®) and/or the quality of services they provide (MLS®, Multiple Listing Service®)

Listing information last updated on May 23rd, 2025 at 6:17pm MDT