

\$299,000 - 609 10235 112 Street, Edmonton

MLS® #E4435385

\$299,000

2 Bedroom, 2.00 Bathroom, 773 sqft

Condo / Townhouse on 0.00 Acres

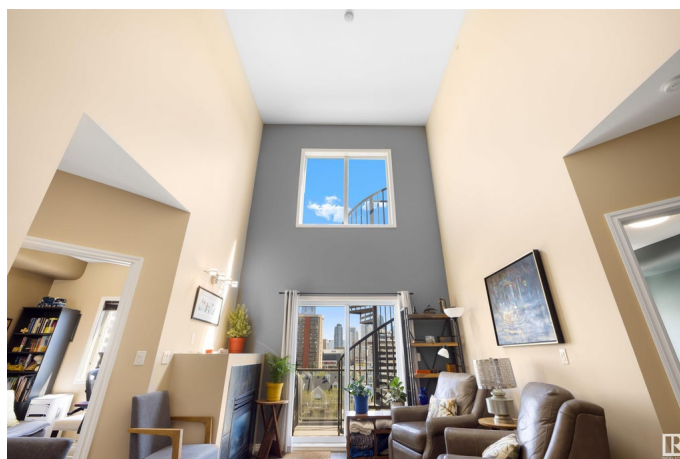
Wåhkwåntåwin, Edmonton, AB

Welcome to The Imperial! Sure to impress, this top floor PENTHOUSE condo includes a private ROOFTOP PATIO with spiral staircase and stunning downtown views. This spacious 2 bed / 2 bath condo features engineered hardwood floors, an open and updated kitchen with stainless steel appliances and granite countertops, and high end finishes throughout. Enjoy relaxing next to the gas fireplace in your loft-style living room, with its soaring 16' vaulted ceiling above. The large primary suite features an ensuite and double walkthrough closet with custom organizers. Convenience is key with in-suite laundry, an underground titled parking stall, and your own private storage cabinet. Prime location within walking distance to Downtown, MacEwan University, restaurants, walking trails, the LRT, and the River Valley. A must see!

Built in 2007

Essential Information

| | |
|----------------|-----------|
| MLS® # | E4435385 |
| Price | \$299,000 |
| Bedrooms | 2 |
| Bathrooms | 2.00 |
| Full Baths | 2 |
| Square Footage | 773 |
| Acres | 0.00 |



| | |
|------------|------------------------|
| Year Built | 2007 |
| Type | Condo / Townhouse |
| Sub-Type | Lowrise Apartment |
| Style | Single Level Apartment |
| Status | Active |

Community Information

| | |
|-------------|----------------------|
| Address | 609 10235 112 Street |
| Area | Edmonton |
| Subdivision | WÃ©hkwÃ©ntÃ©win |
| City | Edmonton |
| County | ALBERTA |
| Province | AB |
| Postal Code | T5K 1M7 |

Amenities

| | |
|----------------|--|
| Amenities | On Street Parking, Ceiling 9 ft., No Animal Home, No Smoking Home, Patio, Secured Parking, Storage-In-Suite, Vaulted Ceiling, Storage Cage, Rooftop Deck/Patio |
| Parking Spaces | 1 |
| Parking | Heated, Stall, Underground |

Interior

| | |
|-------------------|---|
| Interior Features | ensuite bathroom |
| Appliances | Dishwasher-Built-In, Dryer, Microwave Hood Fan, Refrigerator, Stove-Electric, Washer, Window Coverings, See Remarks |
| Heating | In Floor Heat System, Natural Gas |
| Fireplace | Yes |
| Fireplaces | Tile Surround |
| # of Stories | 6 |
| Stories | 1 |
| Has Basement | Yes |
| Basement | None, No Basement |

Exterior

| | |
|-------------------|---|
| Exterior | Concrete, Stucco |
| Exterior Features | Golf Nearby, Playground Nearby, Public Transportation, Schools, Shopping Nearby, View City, View Downtown |
| Roof | Tar & Gravel |

| | |
|--------------|--------------------|
| Construction | Concrete, Stucco |
| Foundation | Concrete Perimeter |

School Information

| | |
|------------|----------------------------|
| Elementary | St.Catherine,Grandin |
| Middle | St.Catherine,Spruce Avenue |
| High | Victoria School of Arts |

Additional Information

| | |
|----------------|---------------|
| Date Listed | May 8th, 2025 |
| Days on Market | 44 |
| Zoning | Zone 12 |
| Condo Fee | \$644 |

DATA IS DEEMED RELIABLE BUT IS NOT GUARANTEED ACCURATE BY THE REALTORS® ASSOCIATION OF EDMONTON. COPYRIGHT 2025 BY THE REALTORS® ASSOCIATION OF EDMONTON. ALL RIGHTS RESERVED.Trademarks are owned or controlled by the Canadian Real Estate Association (CREA) and identify real estate professionals who are members of CREA (REALTOR®, REALTORS®) and/or the quality of services they provide (MLS®, Multiple Listing Service®)

Listing information last updated on June 21st, 2025 at 4:48pm MDT