

\$785,000 - 16213 32 Avenue, Edmonton

MLS® #E4436576

\$785,000

5 Bedroom, 4.00 Bathroom, 1,926 sqft
Single Family on 0.00 Acres

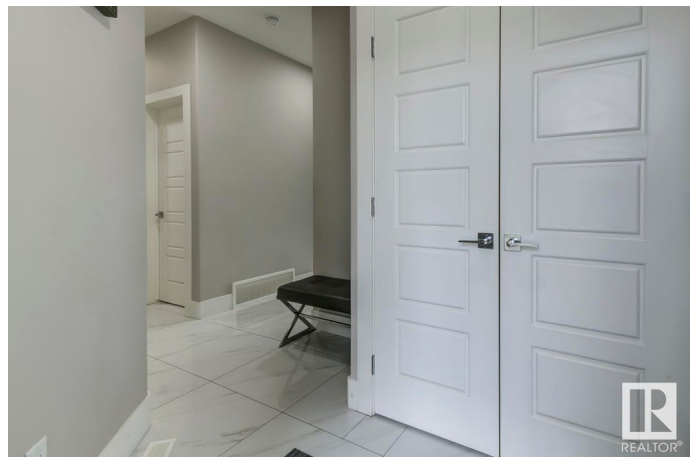
Glenridding Ravine, Edmonton, AB

Welcome to Ridgecrest at Glenridding Ravines. This beautifully finished home offers direct south-facing views of the water, making it one of the most sought-after locations in the community. Inside, you'll find an open-concept layout with 18-ft ceilings, quartz countertops, a built-in wall oven, gas cooktop, & a stylish chimney hood fan. The main floor includes a full bathroom & a versatile room—ideal for guests or anyone needing main-level access. Upstairs, the primary suite stands out with coffered ceilings, two large walk-in closets, and a 5-pce ensuite featuring a deep soaker tub. The upper level also includes a full bathroom, 2 large bedrooms, laundry room, & a flexible bonus space perfect for a home office or lounge. The walkout basement is fully finished with a kitchen and 2 more bedrooms—great for entertaining, relaxing, or setting up a home gym. Backing directly onto the water with no rear neighbors, this home offers peace, privacy, and premium finishes throughout.

Built in 2021

Essential Information

MLS® #	E4436576
Price	\$785,000
Bedrooms	5



Bathrooms	4.00
Full Baths	4
Square Footage	1,926
Acres	0.00
Year Built	2021
Type	Single Family
Sub-Type	Detached Single Family
Style	2 Storey
Status	Active

Community Information

Address	16213 32 Avenue
Area	Edmonton
Subdivision	Glenridding Ravine
City	Edmonton
County	ALBERTA
Province	AB
Postal Code	T6W 4P2

Amenities

Amenities	Ceiling 9 ft., Hot Water Tankless, Vaulted Ceiling, Vinyl Windows, Walkout Basement, Natural Gas Stove Hookup, 9 ft. Basement Ceiling
Parking	Double Garage Attached, Over Sized
Is Waterfront	Yes

Interior

Interior Features	ensuite bathroom
Appliances	Dryer, Garage Control, Garage Opener, Hood Fan, Oven-Built-In, Oven-Microwave, Stove-Countertop Gas, Stove-Electric, Washer, Window Coverings, Refrigerators-Two, Dishwasher-Two
Heating	Forced Air-1, Natural Gas
Fireplace	Yes
Fireplaces	Tile Surround
Stories	3
Has Suite	Yes
Has Basement	Yes
Basement	Full, Finished

Exterior

Exterior	Wood, Stone, Vinyl
Exterior Features	Backs Onto Lake, Cul-De-Sac, Fenced, Public Transportation, Sloping Lot, View Lake
Roof	Asphalt Shingles
Construction	Wood, Stone, Vinyl
Foundation	Concrete Perimeter

Additional Information

Date Listed	May 15th, 2025
Days on Market	21
Zoning	Zone 56

DATA IS DEEMED RELIABLE BUT IS NOT GUARANTEED ACCURATE BY THE REALTORS® ASSOCIATION OF EDMONTON. COPYRIGHT 2025 BY THE REALTORS® ASSOCIATION OF EDMONTON. ALL RIGHTS RESERVED. Trademarks are owned or controlled by the Canadian Real Estate Association (CREA) and identify real estate professionals who are members of CREA (REALTOR®, REALTORS®) and/or the quality of services they provide (MLS®, Multiple Listing Service®)

Listing information last updated on June 5th, 2025 at 6:02am MDT