

## **\$525,000 - 9820 185 Street, Edmonton**

MLS® #E4436890

**\$525,000**

3 Bedroom, 2.50 Bathroom, 1,851 sqft

Single Family on 0.00 Acres

La Perle, Edmonton, AB

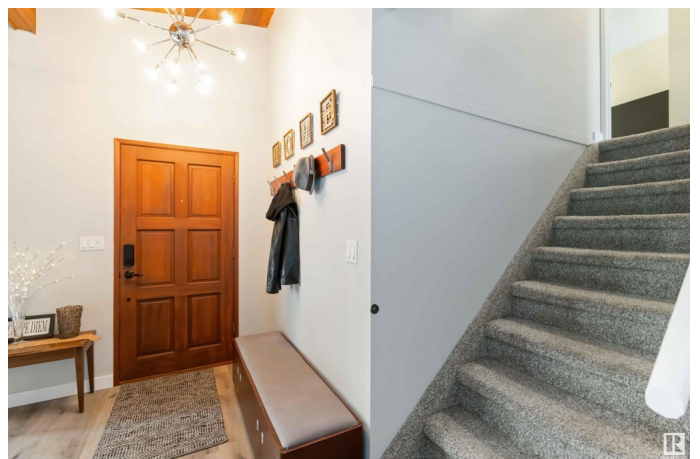
Come home to this beautifully updated and renovated 1,851sqft, 3-BEDROOM, move-in-ready, split-level style FAMILY HOME in La Perle. The main floor opens to a beautiful vaulted ceiling over the living and dining rooms. The updated kitchen has an island dining nook overlooking the beautiful park-like backyard. The sunken family room features a beautiful fireplace & offers access to the backyard park. Located just off the family room is the coffee bar, laundry, a 2pce powder room, access to the oversized 24x24 attached garage, & a side entrance to the yard. Upstairs, youâ€™ll find 3 spacious bedrooms, including a serene primary suite with 3pce ensuite bath. The main bath is conveniently located between the other two bedrooms. The partially developed basement adds great bonus space, including an area for guests to stay comfortably and a home gym. Situated at the bottom of a quiet west end CUL-DE-SAC location, this home blends modern updates with family-friendly function & proximity to ALL amenities. Come home!

Built in 1980

### **Essential Information**

MLS® # E4436890

Price \$525,000



Bedrooms	3
Bathrooms	2.50
Full Baths	2
Half Baths	1
Square Footage	1,851
Acres	0.00
Year Built	1980
Type	Single Family
Sub-Type	Detached Single Family
Style	1 and Half Storey
Status	Active

### **Community Information**

Address	9820 185 Street
Area	Edmonton
Subdivision	La Perle
City	Edmonton
County	ALBERTA
Province	AB
Postal Code	T5T 3E5

### **Amenities**

Amenities	Ceiling 10 ft., Deck, Detectors Smoke, Hot Tub
Parking	Double Garage Attached, Over Sized

### **Interior**

Interior Features	ensuite bathroom
Appliances	Dishwasher-Built-In, Dryer, Garage Control, Garage Opener, Microwave Hood Fan, Refrigerator, Storage Shed, Stove-Electric, Vacuum System Attachments, Vacuum Systems, Washer, Window Coverings, Wine/Beverage Cooler, Hot Tub
Heating	Forced Air-1, Natural Gas
Fireplace	Yes
Fireplaces	Brick Facing, Glass Door
Stories	2
Has Basement	Yes
Basement	Full, Partially Finished

### **Exterior**

Exterior	Wood, Brick
Exterior Features	Cul-De-Sac, Flat Site, Golf Nearby, Level Land, Park/Reserve, Playground Nearby, Public Transportation, Schools, Shopping Nearby
Roof	Asphalt Shingles
Construction	Wood, Brick
Foundation	Concrete Perimeter

### **School Information**

Elementary	LaPerle School
Middle	Alex Janvier School
High	Jasper Place School

### **Additional Information**

Date Listed	May 16th, 2025
Days on Market	5
Zoning	Zone 20

DATA IS DEEMED RELIABLE BUT IS NOT GUARANTEED ACCURATE BY THE REALTORS® ASSOCIATION OF EDMONTON. COPYRIGHT 2025 BY THE REALTORS® ASSOCIATION OF EDMONTON. ALL RIGHTS RESERVED. Trademarks are owned or controlled by the Canadian Real Estate Association (CREA) and identify real estate professionals who are members of CREA (REALTOR®, REALTORS®) and/or the quality of services they provide (MLS®, Multiple Listing Service®)

Listing information last updated on May 21st, 2025 at 8:47am MDT