

\$549,900 - 2931 26 Ave, Edmonton

MLS® #E4438465

\$549,900

4 Bedroom, 3.50 Bathroom, 1,662 sqft

Single Family on 0.00 Acres

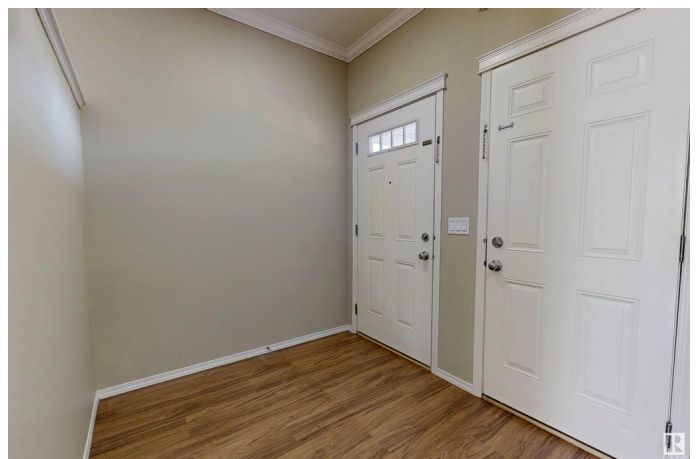
Silver Berry, Edmonton, AB

Welcome to this beautiful 2 storey home offering 4 bedrooms, 3.5 baths with SEPARATE ENTRANCE & SEPARATE KITCHEN with double attached garage. The main floor features a bright living room with electric fireplace, main floor laundry, a 2-pc bath for guests. The kitchen offers a large island with breakfast nook, opening to a great size custom built deck, ideal for outdoor entertaining. Upstairs includes 3 generously sized bedrooms, 2 full bath & bonus area. The fully finished basement has another bedroom, SECOND KITCHEN, 4-pc bath & a huge rec room. Backyard has custom build deck with fully fenced backyard and fully landscaped. Upgrades include Dishwasher(2025), HWT(2023), Central Air conditioner(2022), Extended driveway, Laminate flooring upstairs. Located in the desirable SILVERBERRY community, this property is close to schools, public transit, and the Whitemud Freeway. Walking distance to park and Close to all amenities.

Built in 2010

Essential Information

MLS® #	E4438465
Price	\$549,900
Bedrooms	4



Bathrooms	3.50
Full Baths	3
Half Baths	1
Square Footage	1,662
Acres	0.00
Year Built	2010
Type	Single Family
Sub-Type	Detached Single Family
Style	2 Storey
Status	Active

Community Information

Address	2931 26 Ave
Area	Edmonton
Subdivision	Silver Berry
City	Edmonton
County	ALBERTA
Province	AB
Postal Code	T6T 0H6

Amenities

Amenities	Air Conditioner, Deck
Parking	Double Garage Attached

Interior

Interior Features	ensuite bathroom
Appliances	Air Conditioning-Central, Dishwasher-Built-In, Dryer, Hood Fan, Washer, Window Coverings, Refrigerators-Two, Stoves-Two
Heating	Forced Air-1, Natural Gas
Fireplace	Yes
Fireplaces	See Remarks
Stories	3
Has Basement	Yes
Basement	Full, Finished

Exterior

Exterior	Wood, Vinyl
Exterior Features	Fenced, Landscaped, Playground Nearby, Public Transportation, Schools, Shopping Nearby

Roof	Asphalt Shingles
Construction	Wood, Vinyl
Foundation	Concrete Perimeter

Additional Information

Date Listed	May 25th, 2025
Days on Market	32
Zoning	Zone 30

DATA IS DEEMED RELIABLE BUT IS NOT GUARANTEED ACCURATE BY THE REALTORS® ASSOCIATION OF EDMONTON. COPYRIGHT 2025 BY THE REALTORS® ASSOCIATION OF EDMONTON. ALL RIGHTS RESERVED.Trademarks are owned or controlled by the Canadian Real Estate Association (CREA) and identify real estate professionals who are members of CREA (REALTOR®, REALTORS®) and/or the quality of services they provide (MLS®, Multiple Listing Service®)

Listing information last updated on June 26th, 2025 at 8:32am MDT