

\$400,000 - 10404a 28a Avenue, Edmonton

MLS® #E4438805

\$400,000

3 Bedroom, 2.50 Bathroom, 1,192 sqft

Single Family on 0.00 Acres

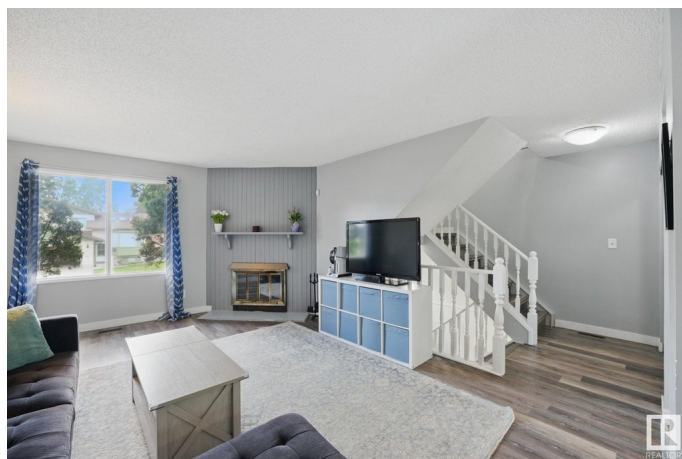
Ermineskin, Edmonton, AB

This charming 2-storey home is nestled in a family-friendly neighborhood and is truly move-in ready AND backing onto a park! Featuring 2+1 bedrooms, 2.5 bathrooms, and a fully finished basement, this home has had nearly everything updated. Enjoy the durability of vinyl plank flooring, a high-efficiency furnace (2022), newer shingles (2021), newer basement bathroom, newer windows, fence, and modern light fixtures throughout. The bright south-facing living room with a cozy wood-burning fireplace flows into the dining area and functional kitchen. Double doors lead to your deck and large yard overlooking the parkâ€”perfect for outdoor living and offering plenty of privacy. Upstairs offers 2 spacious bedrooms and a full bath. The basement includes a large family room, 3rd bedroom, and a full bath. Long driveway offers plenty of parking. This one checks all the boxes!

Built in 1981

Essential Information

MLS® #	E4438805
Price	\$400,000
Bedrooms	3
Bathrooms	2.50
Full Baths	2
Half Baths	1



Square Footage	1,192
Acres	0.00
Year Built	1981
Type	Single Family
Sub-Type	Detached Single Family
Style	2 Storey
Status	Active

Community Information

Address	10404a 28a Avenue
Area	Edmonton
Subdivision	Ermineskin
City	Edmonton
County	ALBERTA
Province	AB
Postal Code	T6J 4J6

Amenities

Amenities	Deck, See Remarks
Parking	Parking Pad Cement/Paved

Interior

Appliances	Dishwasher-Built-In, Dryer, Refrigerator, Stove-Electric, Washer
Heating	Forced Air-1, Natural Gas
Fireplace	Yes
Fireplaces	Oak Surround
Stories	3
Has Basement	Yes
Basement	Full, Finished

Exterior

Exterior	Wood, Stucco
Exterior Features	Backs Onto Park/Trees, Landscaped, Playground Nearby, Public Transportation, Schools, Shopping Nearby, See Remarks
Roof	Asphalt Shingles
Construction	Wood, Stucco
Foundation	Concrete Perimeter

Additional Information

Date Listed May 28th, 2025

Days on Market 12

Zoning Zone 16

DATA IS DEEMED RELIABLE BUT IS NOT GUARANTEED ACCURATE BY THE REALTORS® ASSOCIATION OF EDMONTON. COPYRIGHT 2025 BY THE REALTORS® ASSOCIATION OF EDMONTON. ALL RIGHTS RESERVED. Trademarks are owned or controlled by the Canadian Real Estate Association (CREA) and identify real estate professionals who are members of CREA (REALTOR®, REALTORS®) and/or the quality of services they provide (MLS®, Multiple Listing Service®)

Listing information last updated on June 8th, 2025 at 10:47pm MDT