

\$195,000 - 227 Lancaster Terrace, Edmonton

MLS® #E4438989

\$195,000

3 Bedroom, 1.50 Bathroom, 1,200 sqft
Condo / Townhouse on 0.00 Acres

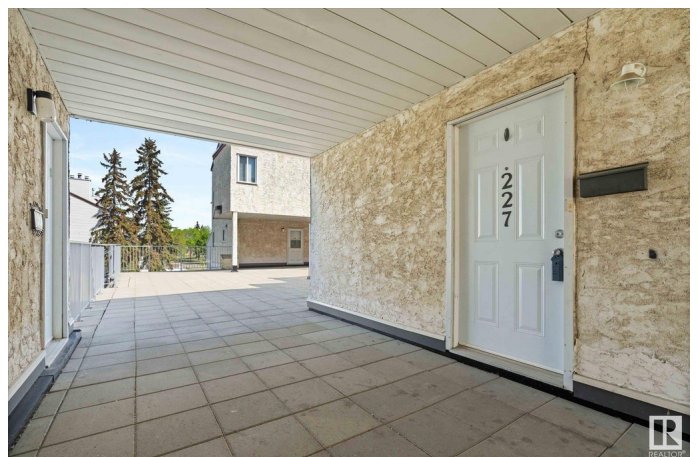
Dunluce, Edmonton, AB

Tucked away in a quiet spot in Lancaster Terrace, this 2-storey townhome offers privacy and charm! Next to trees, enjoy morning coffee on your lovely patio while listening to birds chirp – a peaceful escape in the city. The main floor is freshly renovated with gorgeous vinyl plank floors, a bright, open-concept kitchen with crisp white cabinetry, a built-in buffet and loads of storage and counter space! Upstairs, you'll find stylish laminate floors, 3 nice bdrs, the main bath and even a convenient 2 piece ensuite. Laundry is currently on the main but could easily be moved back up. You'll love the one covered parking stall included! Families will love the nearby schools, splash and skate park, playgrounds, rec centre, YMCA, plus easy access to public transit (Henday, Yellowhead, future lrt) make commuting easy. All in a well-managed condo – the perfect blend of style, comfort, and location! Don't miss out!

Built in 1977

Essential Information

MLS® #	E4438989
Price	\$195,000
Bedrooms	3
Bathrooms	1.50



Full Baths	1
Half Baths	1
Square Footage	1,200
Acres	0.00
Year Built	1977
Type	Condo / Townhouse
Sub-Type	Townhouse
Style	2 Storey
Status	Active

Community Information

Address	227 Lancaster Terrace
Area	Edmonton
Subdivision	Dunluce
City	Edmonton
County	ALBERTA
Province	AB
Postal Code	T5X 5T4

Amenities

Amenities	Off Street Parking, Parking-Visitor, Patio, Vinyl Windows
Parking Spaces	1
Parking	Parkade

Interior

Interior Features	ensuite bathroom
Appliances	Dishwasher-Built-In, Dryer, Fan-Ceiling, Microwave Hood Fan, Refrigerator, Stove-Electric, Washer
Heating	Forced Air-1, Natural Gas
Stories	2
Has Basement	Yes
Basement	None, No Basement

Exterior

Exterior	Wood, Stucco, Vinyl
Exterior Features	Fenced, Flat Site, No Through Road, Playground Nearby, Public Transportation, Schools, Shopping Nearby
Roof	Asphalt Shingles
Construction	Wood, Stucco, Vinyl

Foundation Concrete Perimeter

Additional Information

Date Listed May 28th, 2025
Days on Market 14
Zoning Zone 27
Condo Fee \$484

DATA IS DEEMED RELIABLE BUT IS NOT GUARANTEED ACCURATE BY THE REALTORS® ASSOCIATION OF EDMONTON. COPYRIGHT 2025 BY THE REALTORS® ASSOCIATION OF EDMONTON. ALL RIGHTS RESERVED.Trademarks are owned or controlled by the Canadian Real Estate Association (CREA) and identify real estate professionals who are members of CREA (REALTOR®, REALTORS®) and/or the quality of services they provide (MLS®, Multiple Listing Service®)
Listing information last updated on June 11th, 2025 at 8:17pm MDT