

## \$399,900 - 10811 20a Avenue, Edmonton

MLS® #E4439435

**\$399,900**

3 Bedroom, 1.50 Bathroom, 1,189 sqft

Single Family on 0.00 Acres

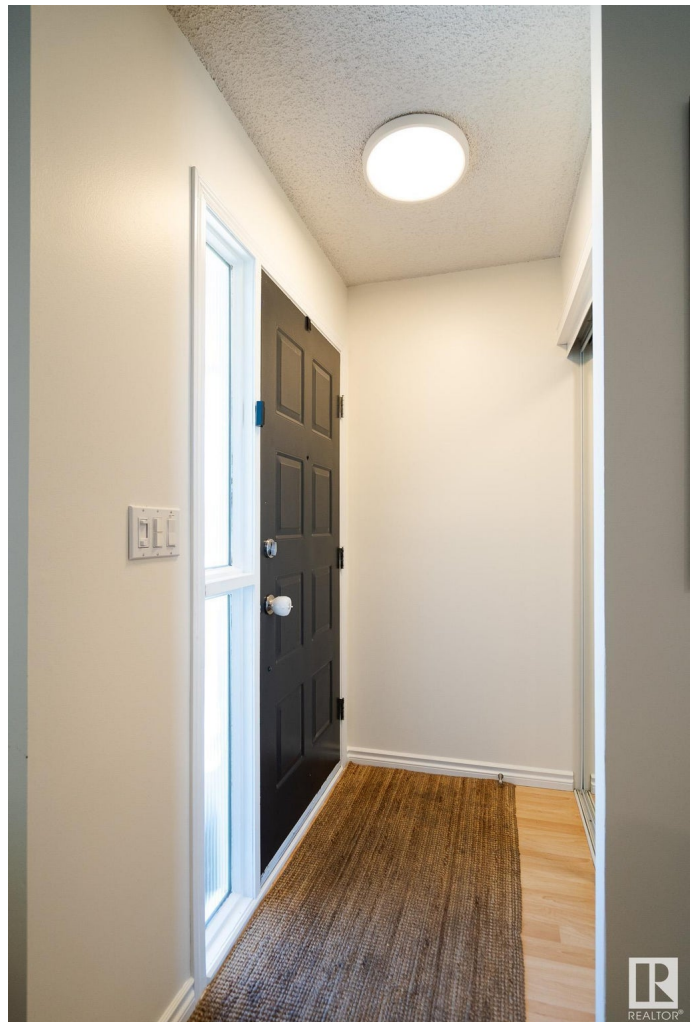
Keheewin, Edmonton, AB

Nestled on a quiet street in a prime location, this beautifully updated home blends comfort, style, and convenience. You'll be greeted by warm curb appeal and a bright, welcoming foyer. Inside, sunlight floods the spacious living room through gorgeous windows. Durable laminate floors add both style and function across the main level. The kitchen is a delight for any home chef, featuring newer cabinetry and generous counter space. The charming dining nook overlooks the lush backyard. Enjoy sunny afternoons or peaceful evenings on the deck in this serene outdoor retreat. Upstairs, you'll find a large primary bedroom, 2 additional bedrooms and full bath. The finished basement features a spacious family room with plush carpeting. All your big tickets are already done: roof (2024), furnace (2024), h2o tank (2021), fresh paint, newer windows, newer sidewalks, and AC! Don't miss this move-in-ready gem in an unbeatable location close to the LRT, major transit, parks, trails and schools! Completely move-in ready!

Built in 1983

### Essential Information

MLS® #	E4439435
Price	\$399,900
Bedrooms	3



Bathrooms	1.50
Full Baths	1
Half Baths	1
Square Footage	1,189
Acres	0.00
Year Built	1983
Type	Single Family
Sub-Type	Detached Single Family
Style	2 Storey
Status	Active

### Community Information

Address	10811 20a Avenue
Area	Edmonton
Subdivision	Keheewin
City	Edmonton
County	ALBERTA
Province	AB
Postal Code	T6J 5T9

### Amenities

Amenities	Off Street Parking, On Street Parking, Deck, No Smoking Home, See Remarks
Parking	Parking Pad Cement/Paved

### Interior

Appliances	Air Conditioning-Central, Dishwasher-Built-In, Dryer, Microwave Hood Fan, Refrigerator, Storage Shed, Stove-Electric, Washer, Window Coverings
Heating	Forced Air-1, Natural Gas
Stories	2
Has Basement	Yes
Basement	Full, Finished

### Exterior

Exterior	Wood, Brick, Vinyl
Exterior Features	Back Lane, Fenced, Fruit Trees/Shrubs, Golf Nearby, Landscaped, Low Maintenance Landscape, Playground Nearby, Public Transportation, Schools, Shopping Nearby
Roof	Asphalt Shingles

Construction	Wood, Brick, Vinyl
Foundation	Concrete Perimeter

### Additional Information

Date Listed	May 30th, 2025
Days on Market	7
Zoning	Zone 16



DATA IS DEEMED RELIABLE BUT IS NOT GUARANTEED ACCURATE BY THE REALTORS® ASSOCIATION OF EDMONTON. COPYRIGHT 2025 BY THE REALTORS® ASSOCIATION OF EDMONTON. ALL RIGHTS RESERVED. Trademarks are owned or controlled by the Canadian Real Estate Association (CREA) and identify real estate professionals who are members of CREA (REALTOR®, REALTORS®) and/or the quality of services they provide (MLS®, Multiple Listing Service®)

Listing information last updated on June 6th, 2025 at 8:32am MDT