

\$609,900 - 3544 Cherry Landing Landing, Edmonton

MLS® #E4441945

\$609,900

4 Bedroom, 3.00 Bathroom, 1,121 sqft

Single Family on 0.00 Acres

The Orchards At Ellerslie, Edmonton, AB

Charming Orchards bungalow in a great location - one of the very few bungalows in this community! If you are looking for convenient living on one floor, this is a perfect home for you. PLUS, fully developed basement adds extra living space so you have over 2000 sq.ft. total living space with FOUR bedrooms and THREE full bathrooms! A spacious foyer welcomes you in and the living room at the front of the home is spacious and perfect for entertaining. The kitchen and dining area has a corner pantry and lots of cabinet space. The basement stairs are located at the back of the house and there is a door leading to your outdoor living space - deck and fully fenced yard! The main floor has three spacious bedrooms including the primary with full ensuite and a second full bathroom. Downstairs you have a fourth bedroom and third full bath along with a family room and rec room. PLUS laundry and storage are on this level. Attached double garage for your convenience.

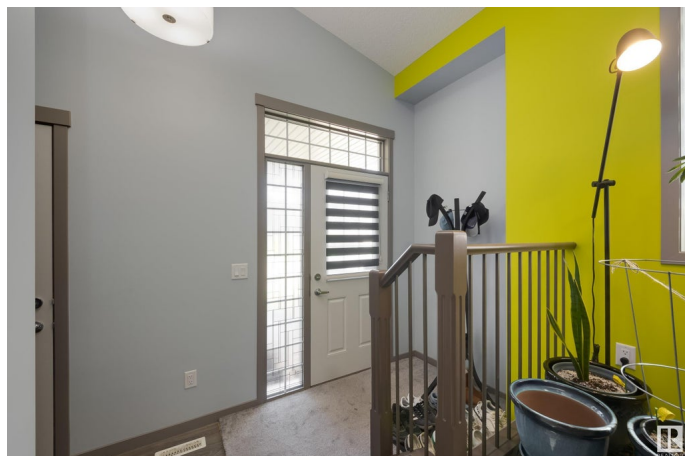
Built in 2018

Essential Information

MLS® # E4441945

Price \$609,900

Bedrooms 4



Bathrooms	3.00
Full Baths	3
Square Footage	1,121
Acres	0.00
Year Built	2018
Type	Single Family
Sub-Type	Detached Single Family
Style	Bungalow
Status	Active

Community Information

Address	3544 Cherry Landing Landing
Area	Edmonton
Subdivision	The Orchards At Ellerslie
City	Edmonton
County	ALBERTA
Province	AB
Postal Code	T6X 2B5

Amenities

Amenities	Ceiling 9 ft., Deck, Vaulted Ceiling
Parking	Double Garage Attached

Interior

Interior Features	ensuite bathroom
Appliances	Dishwasher-Built-In, Dryer, Microwave Hood Fan, Refrigerator, Stove-Electric, Washer, Window Coverings
Heating	Forced Air-1, Natural Gas
Stories	2
Has Basement	Yes
Basement	Full, Finished

Exterior

Exterior	Wood, Vinyl
Exterior Features	Back Lane, Fenced, Landscaped, Recreation Use, Schools, Shopping Nearby
Roof	Asphalt Shingles
Construction	Wood, Vinyl
Foundation	Concrete Perimeter

School Information

Elementary Jan Reimer School

Additional Information

Date Listed June 12th, 2025
Days on Market 7
Zoning Zone 53
HOA Fees 600
HOA Fees Freq. Annually

DATA IS DEEMED RELIABLE BUT IS NOT GUARANTEED ACCURATE BY THE REALTORS® ASSOCIATION OF EDMONTON. COPYRIGHT 2025 BY THE REALTORS® ASSOCIATION OF EDMONTON. ALL RIGHTS RESERVED.Trademarks are owned or controlled by the Canadian Real Estate Association (CREA) and identify real estate professionals who are members of CREA (REALTOR®, REALTORS®) and/or the quality of services they provide (MLS®, Multiple Listing Service®)
Listing information last updated on June 19th, 2025 at 8:18am MDT