

## \$199,900 - 112 2035 Grantham Court, Edmonton

MLS® #E4443429

**\$199,900**

2 Bedroom, 1.00 Bathroom, 800 sqft

Condo / Townhouse on 0.00 Acres

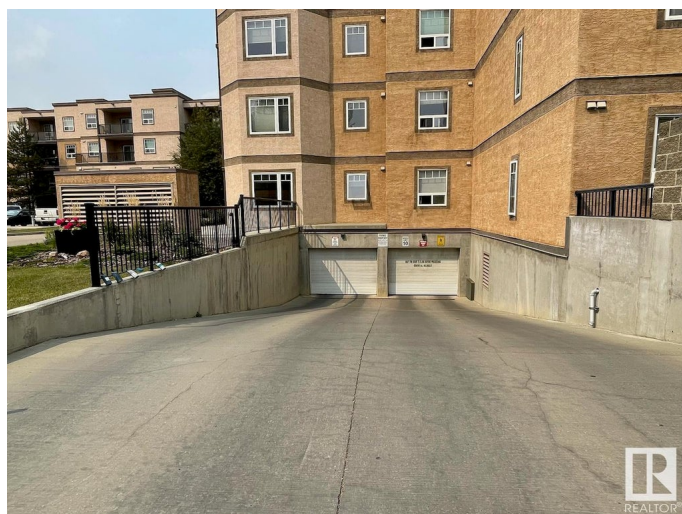
Glastonbury, Edmonton, AB

This two bedroom condo is a perfect first home or investment in popular Glastonbury! Enjoy central air conditioning, in-suite storage & laundry hook-ups, and underground titled parking. This property has a spacious kitchen with a tile backsplash and breakfast bar, perfect for entertaining. The dining nook adjoins the bright living room with gas fireplace. Easy access to your large private patio with gas BBQ hook-up. The primary bedroom is ensuite to the main 4pc. bathroom and has a double sided walk-through closet. The second bedroom is ideal for guests or a perfect home office. Close to shopping, transit, parks, and all other amenities. A quick closing is available.

Built in 2008

### Essential Information

MLS® #	E4443429
Price	\$199,900
Bedrooms	2
Bathrooms	1.00
Full Baths	1
Square Footage	800
Acres	0.00
Year Built	2008
Type	Condo / Townhouse



Sub-Type	Lowrise Apartment
Style	Single Level Apartment
Status	Active

### Community Information

Address	112 2035 Grantham Court
Area	Edmonton
Subdivision	Glastonbury
City	Edmonton
County	ALBERTA
Province	AB
Postal Code	T5T 3X4

### Amenities

Amenities	Car Wash, Ceiling 9 ft., Detectors Smoke, Guest Suite, Parking-Plug-Ins, Parking-Visitor, Patio, Social Rooms, Storage-In-Suite
Parking Spaces	1
Parking	Underground

### Interior

Interior Features	ensuite bathroom
Appliances	See Remarks
Heating	In Floor Heat System, Natural Gas
Fireplace	Yes
Fireplaces	Corner
# of Stories	4
Stories	1
Has Basement	Yes
Basement	None, No Basement

### Exterior

Exterior	Wood, Stucco
Exterior Features	Golf Nearby, Landscaped, Public Transportation, Schools, Shopping Nearby
Roof	Tar & Gravel
Construction	Wood, Stucco
Foundation	Concrete Perimeter

### Additional Information

Date Listed	June 19th, 2025
Days on Market	25
Zoning	Zone 58
RE / Bank Owned	Yes
Condo Fee	\$474

DATA IS DEEMED RELIABLE BUT IS NOT GUARANTEED ACCURATE BY THE REALTORS® ASSOCIATION OF EDMONTON. COPYRIGHT 2025 BY THE REALTORS® ASSOCIATION OF EDMONTON. ALL RIGHTS RESERVED. Trademarks are owned or controlled by the Canadian Real Estate Association (CREA) and identify real estate professionals who are members of CREA (REALTOR®, REALTORS®) and/or the quality of services they provide (MLS®, Multiple Listing Service®)

Listing information last updated on July 14th, 2025 at 6:47pm MDT