

# \$299,999 - 10448 142 Street, Edmonton

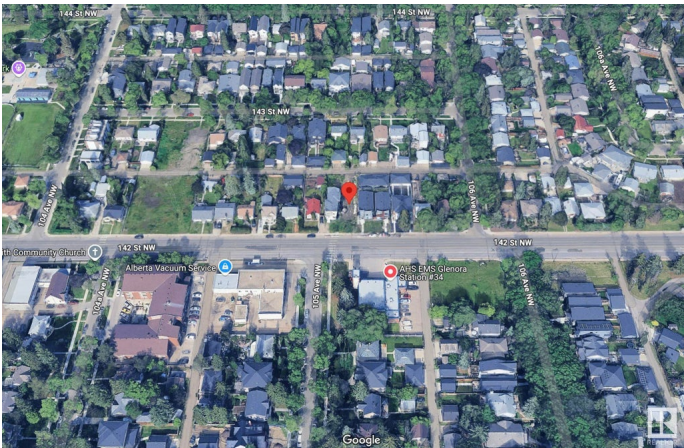
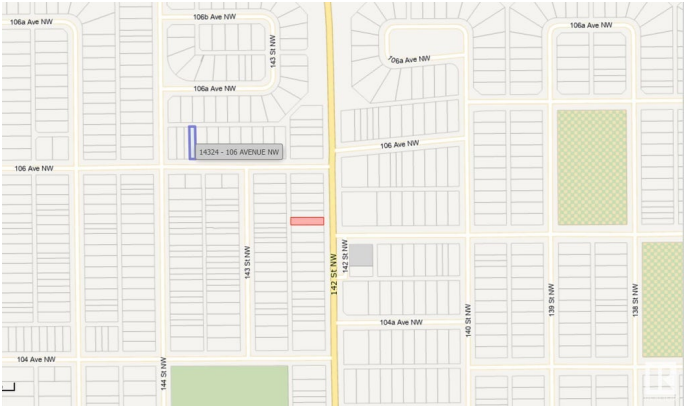
MLS® #E4445425

**\$299,999**

0 Bedroom, 0.00 Bathroom,  
Single Family on 0.00 Acres

Grovenor, Edmonton, AB

Great Development opportunity to build in the highly desirable community of Grovenor. This vacant 31.5 ft x 143 ft RS-zoned lot is ideal for a stunning single-family home or potential infill project. The property includes rear lane access and upgraded services, making it development-ready.



## Essential Information

MLS® #	E4445425
Price	\$299,999
Bathrooms	0.00
Acres	0.00
Type	Single Family
Sub-Type	Vacant Lot/Land
Status	Active

## Community Information

Address	10448 142 Street
Area	Edmonton
Subdivision	Grovenor
City	Edmonton
County	ALBERTA
Province	AB
Postal Code	T5N 2P2

## Exterior

Exterior Features    Back Lane, Playground Nearby, Public Transportation, Shopping Nearby

**Additional Information**

Date Listed                July 1st, 2025

Days on Market        3

Zoning                    Zone 21

DATA IS DEEMED RELIABLE BUT IS NOT GUARANTEED ACCURATE BY THE REALTORS® ASSOCIATION OF EDMONTON. COPYRIGHT 2025 BY THE REALTORS® ASSOCIATION OF EDMONTON. ALL RIGHTS RESERVED.Trademarks are owned or controlled by the Canadian Real Estate Association (CREA) and identify real estate professionals who are members of CREA (REALTOR®, REALTORS®) and/or the quality of services they provide (MLS®, Multiple Listing Service®)

Listing information last updated on July 4th, 2025 at 12:18am MDT