

Courtesy Of Jeff D Jackson Of Bode

\$973,682 - 2616 204 Street, Edmonton

MLS® #E4446759

\$973,682

3 Bedroom, 2.50 Bathroom, 2,421 sqft

Single Family on 0.00 Acres

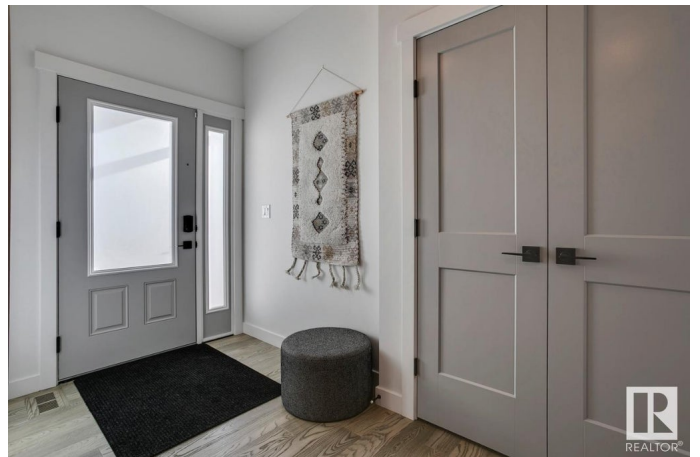
The Uplands, Edmonton, AB

Experience timeless charm with modern luxury in this stunning Modern Farmhouse showhome. Boasting a triple-car garage and a spacious mud room with an adjacent tech area and built-in shelving, this home blends function with style. The gourmet kitchen is a chef's dream, featuring dual islands and a prep sink—perfect for entertaining. Enjoy formal dining for family gatherings or convert it into a private home office. The Great Room impresses with soaring open-to-below ceilings and a striking 60" electric fireplace. Upstairs, find a convenient second-floor laundry and an entertainment-ready bonus room with a TV niche. The Primary Bedroom is your private retreat, complete with a luxurious 5-piece ensuite and a freestanding soaker tub. Bedrooms 2 and 3 share a practical Jack-and-Jill bathroom. Designed for modern living with thoughtful details throughout—this home has it all.

Built in 2022

Essential Information

MLS® #	E4446759
Price	\$973,682
Bedrooms	3
Bathrooms	2.50
Full Baths	2



Half Baths	1
Square Footage	2,421
Acres	0.00
Year Built	2022
Type	Single Family
Sub-Type	Detached Single Family
Style	2 Storey
Status	Active

Community Information

Address	2616 204 Street
Area	Edmonton
Subdivision	The Uplands
City	Edmonton
County	ALBERTA
Province	AB
Postal Code	T6M 0N9

Amenities

Amenities	Air Conditioner, Ceiling 9 ft., Closet Organizers
Parking Spaces	6
Parking	Triple Garage Attached

Interior

Interior Features	ensuite bathroom
Appliances	Air Conditioning-Central, Dishwasher-Built-In, Dryer, Hood Fan, Oven-Microwave, Refrigerator, Stove-Electric, Washer, Window Coverings
Heating	Forced Air-1, Natural Gas
Fireplace	Yes
Fireplaces	Insert
Stories	2
Has Basement	Yes
Basement	Full, Unfinished

Exterior

Exterior	Wood, Vinyl
Exterior Features	Park/Reserve, Playground Nearby, Schools, Shopping Nearby
Roof	Asphalt Shingles

Construction	Wood, Vinyl
Foundation	Concrete Perimeter

Additional Information

Date Listed	July 9th, 2025
Days on Market	16
Zoning	Zone 57

DATA IS DEEMED RELIABLE BUT IS NOT GUARANTEED ACCURATE BY THE REALTORS® ASSOCIATION OF EDMONTON. COPYRIGHT 2025 BY THE REALTORS® ASSOCIATION OF EDMONTON. ALL RIGHTS RESERVED.Trademarks are owned or controlled by the Canadian Real Estate Association (CREA) and identify real estate professionals who are members of CREA (REALTOR®, REALTORS®) and/or the quality of services they provide (MLS®, Multiple Listing Service®)

Listing information last updated on July 25th, 2025 at 4:47am MDT