

Courtesy Of Mina D Gayed Of Mozaic Realty Group

\$374,900 - 7515 184 Street, Edmonton

MLS® #E4450696

\$374,900

4 Bedroom, 2.50 Bathroom, 1,195 sqft

Single Family on 0.00 Acres

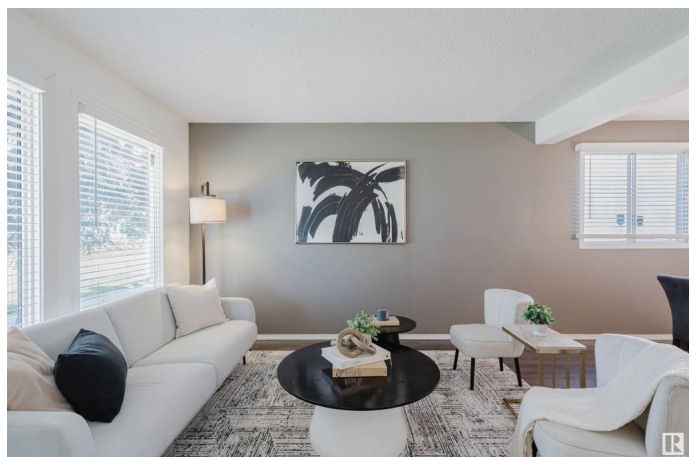
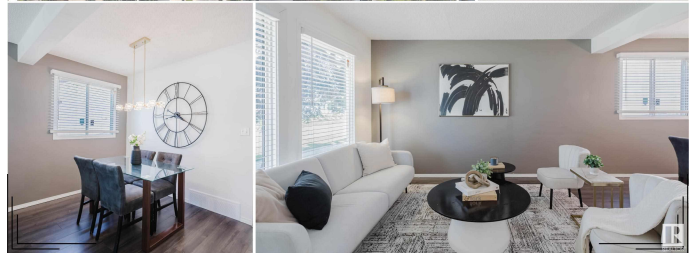
Lymburn, Edmonton, AB

Welcome to this charming 2-storey home in the heart of Lymburn, offering over 1,700 sq.ft. of total living space with 3 bedrooms and 2.5 baths! You'll love the cozy and functional main floor featuring a spacious living room, dining area, and a stylish upgraded kitchen with modern two-tone cabinetry and large windows that flood the home with natural light. Upstairs boasts an oversized primary bedroom, two additional bedrooms, and a full 4-piece bath. The basement offers additional flexible living space with a full bathroom—perfect for a family room, home office, or gym. Step outside to your generous, fully landscaped backyard with a large deck, mature trees, and plenty of sun for summer enjoyment. Recent upgrades include shingles, partial windows, kitchen, NEW carpet, high-efficiency furnace & HWT. Just steps from Lymburn Park, schools, transit, and minutes from Whitemud, Anthony Henday, & West Edmonton Mall. A fantastic opportunity in a family-friendly neighbourhood! A must-see gem in a prime location!

Built in 1982

Essential Information

MLS® #	E4450696
Price	\$374,900
Bedrooms	4



Bathrooms	2.50
Full Baths	2
Half Baths	1
Square Footage	1,195
Acres	0.00
Year Built	1982
Type	Single Family
Sub-Type	Detached Single Family
Style	2 Storey
Status	Active

Community Information

Address	7515 184 Street
Area	Edmonton
Subdivision	Lymburn
City	Edmonton
County	ALBERTA
Province	AB
Postal Code	T5T 4A2

Amenities

Amenities	Deck
Parking Spaces	2
Parking	Double Garage Detached

Interior

Appliances	Dishwasher-Built-In, Dryer, Garage Control, Garage Opener, Microwave Hood Fan, Refrigerator, Stove-Electric, Washer, Window Coverings
Heating	Forced Air-1, Natural Gas
Stories	3
Has Basement	Yes
Basement	Full, Partially Finished

Exterior

Exterior	Wood, Stucco, Vinyl
Exterior Features	Back Lane, Fenced, Golf Nearby, Landscaped, Playground Nearby, Public Transportation, Schools, Shopping Nearby
Roof	Asphalt Shingles
Construction	Wood, Stucco, Vinyl

Foundation Concrete Perimeter

School Information

Elementary Lymburn School

Middle Parkview School

High Jasper Place School

Additional Information

Date Listed July 31st, 2025

Days on Market 32

Zoning Zone 20

DATA IS DEEMED RELIABLE BUT IS NOT GUARANTEED ACCURATE BY THE REALTORS® ASSOCIATION OF EDMONTON. COPYRIGHT 2025 BY THE REALTORS® ASSOCIATION OF EDMONTON. ALL RIGHTS RESERVED. Trademarks are owned or controlled by the Canadian Real Estate Association (CREA) and identify real estate professionals who are members of CREA (REALTOR®, REALTORS®) and/or the quality of services they provide (MLS®, Multiple Listing Service®)

Listing information last updated on September 1st, 2025 at 9:17am MDT